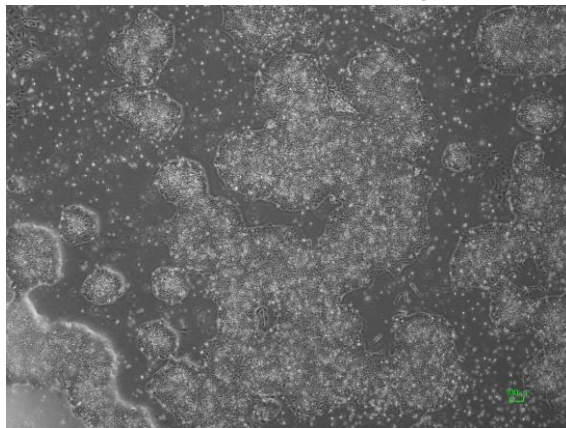


【 CiRA-jk-0045 】 Morphology of iPSC colonies

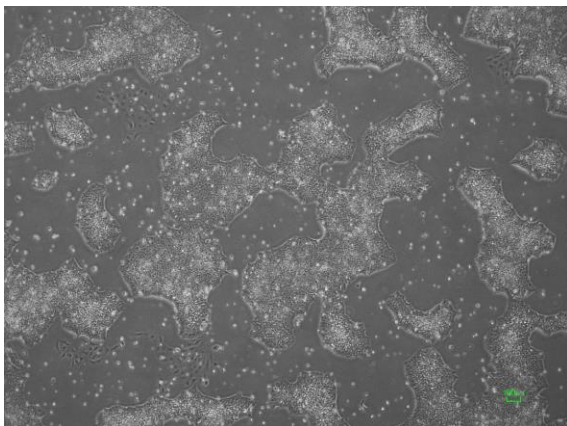
CiRA -jk-0045-A: passage-2



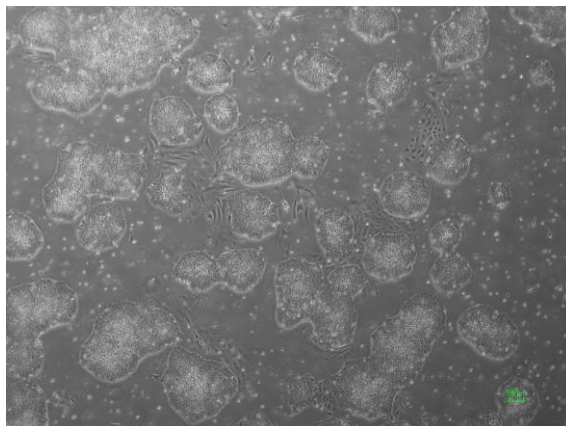
CiRA -jk-0045-B: passage-2



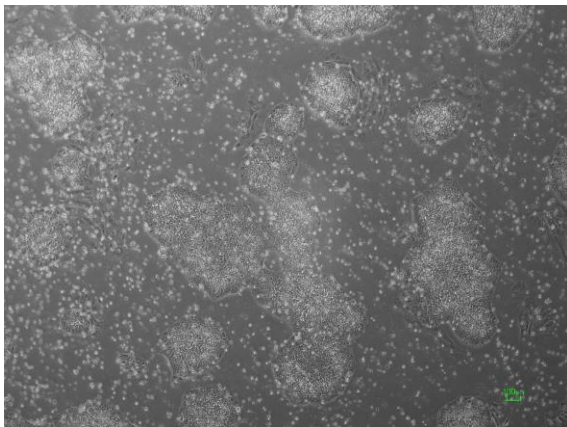
CiRA -jk-0045-C: passage-2



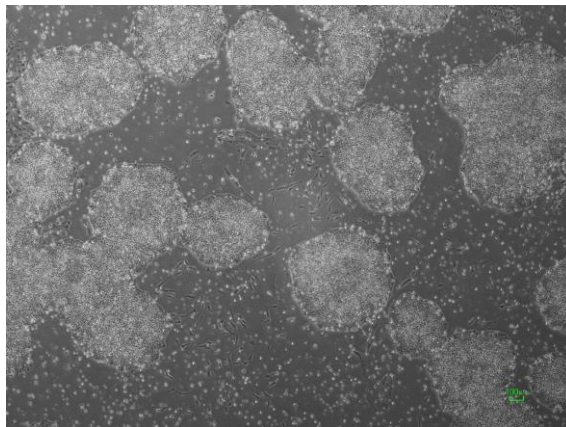
CiRA -jk-0045-D: passage-2



CiRA -jk-0045-E: passage-2



CiRA -jk-0045-F: passage-2



(All images were captured at 4x magnification)